



॥ पढमं नाणं तओ दया ॥

Shri Jain Vidya Prasarak Mandal's

RASIKLAL M. DHARIWAL COLLEGE OF PHARMACY

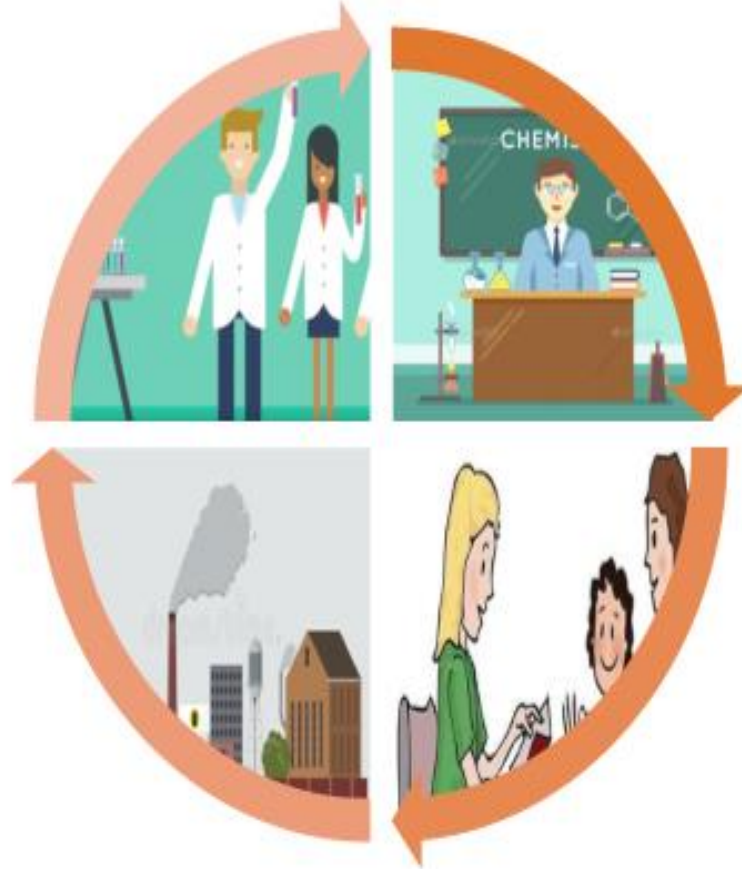
(Approved by AICTE, PCI New Delhi & Affiliated D.T.E. & MSBTE Mumbai)

MSBTE CODE : 0613, DTE CODE : DPH 6499



Manikchand

Acharya Anand Rushiji Marg, Telco Road, D-2, 60-61, Chinchwad Station, Pune-411 019.
Tel.: 020-27457683, Fax No.: 020-27354633, Website: www.rmdcop.com, Email: rmdcop613@gmail.com



PERSPECTIVE PLAN

2018-19 TO 2023-24

PERSPECTIVE PLAN 2018-19 TO 2023-24

INTRODUCTION:

The Rasiklal M. Dhariwal college of Pharmacy has been in forefront of pharmacy education field in PCMC areas of Pune district. It is started in 2003. The college has approved and affiliated to Maharashtra State Board of Technical Education, Mumbai, and Directorate of Technical Education, Mumbai AICTE, New Delhi, Pharmacy Council of India, New Delhi and Govt. of Maharashtra.

PREAMBLE:

Shri Jain Vidya Prasarak Mandal was founded in 1927 with the objective to provide quality education in various disciplines. Rasiklal M. Dhariwal college of Pharmacy formerly known as Shri Fattechand Jain college of Pharmacy established in 2003 with the able guidance of late Hon. Secretary Shankarlalji Jogidasji Mutha and trustee members. At present the institute is running 33 branches imparting education to over 13000 students. The institute has made incredible progress in very short span of time in technical field in PCMC area. The college is approved by AICTE, PCI, New Delhi and DTE and affiliated to MSBTE, Mumbai.

STRATEGIC PLANNING:

As per guideline given by MSBTE perspective plan of the college has been prepared by taking into account aspirations of all stakeholders i.e. faculty, industry, institute students and parents

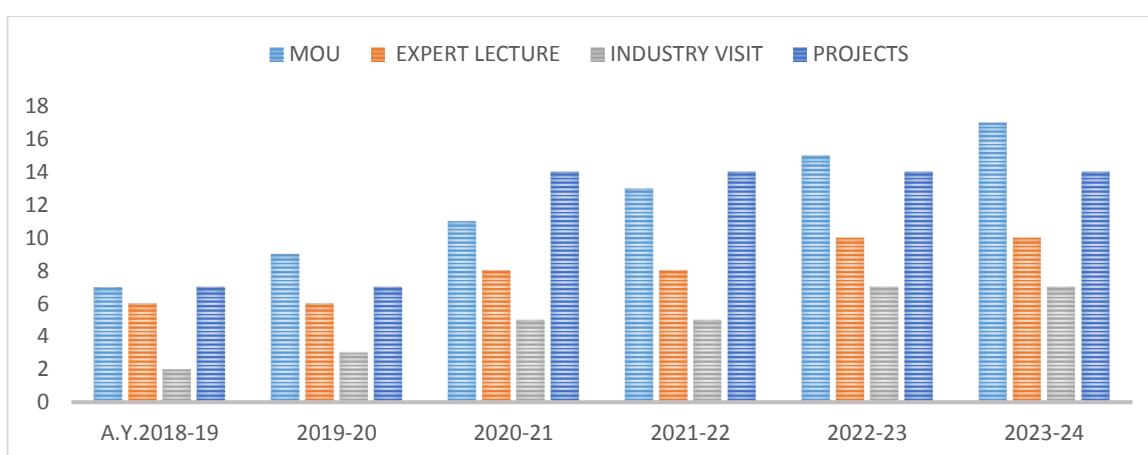
FACULTY:

- Enhancing the quality of teaching by identifying and developing new teaching learning pedagogy
- Up-gradation of skills of faculty through STTP, FDP, QIP, web learning through NPTEL etc.
- Undertaking field project and research project with industry
- To obtain research grants from government agencies.
- Introduce new experiments to provide more student-centric teaching – learning
- Joint multidisciplinary certificate course.

| | 2018-19 | 2019-20 | 2020-21 | 2021-22 | 2022-23 | 2023-24 |
|--|---------|---------|---------|---------|---------|---------|
| Research publication | 3 | 4 | 5 | 7 | 8 | 10 |
| Training/seminar attended | 6 | 8 | 10 | 10 | 10 | 10 |
| Involvement in social activities | 3 | 4 | 10 | 10 | 10 | 10 |
| Participation in MSBTE activities | 3 | 4 | 5 | 10 | 10 | 10 |
| Revenue generation(in INR) | 30000 | 35000 | 60000 | 70000 | 100000 | 100000 |

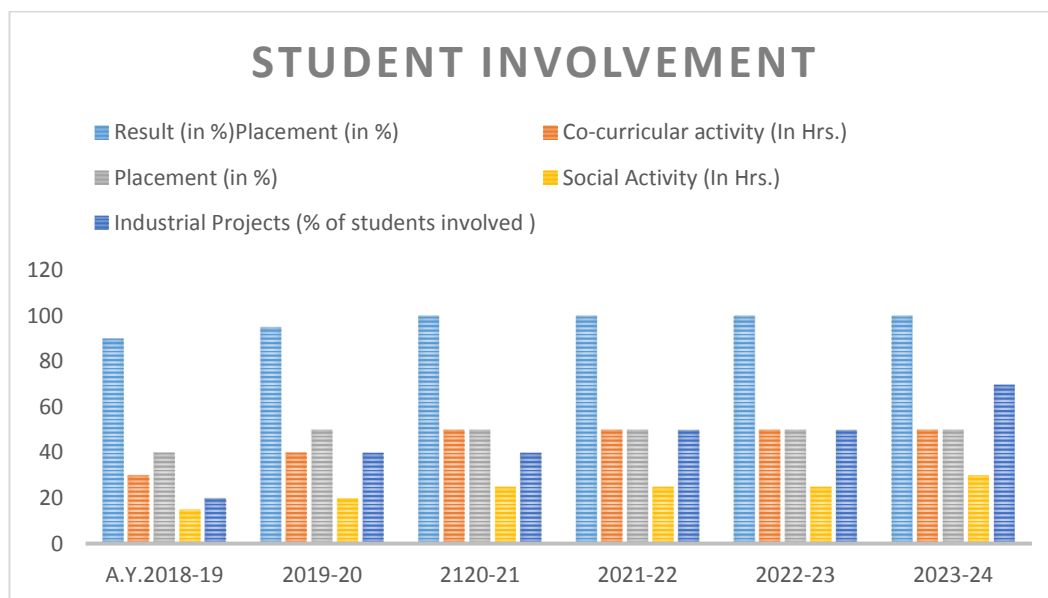
INDUSTRY:

- Improving Industry – Institute – Interaction
- To strengthen the industry-Institute partnership cell (IIPC).
- To involve industry experts in curriculum development and teaching and learning improvements,
- Provision of scholarship and placement, industrial exposures, human resource exchange and apprenticeship.
- Signing MOU with hospital organization, Government organization, academic institute and industry to exchange the knowledge and expertise in relation to pharmacy program.
- Predicted Activities with reference to the actual intake of 60 students per year.



STUDENTS:

- Train students in healthcare services and engage in educational & mentorship activities (i.e., provide continuing education)
- Providing platform to the students to undertake internship in related industries.
- Providing skill based training to the student.
- Make an effort to educate the students for entrepreneurship
- Inculcating professional ethics and leadership qualities in students through various activities
- Developing contribution to social change and promoting initiatives



INSTITUTION:

- Benchmarking the College with the top 10 colleges of pharmacy in the state.
- Digitize the entire system of governance, right from administrative aspects to 360* feedback from all stakeholders to Finance.
- tablet friendly classrooms to form Paper free campus
- Participating MHRD activities and AISHE
- Strengthen library & learning resources.
- Establishment of extension centres for continuing education program.
- Provide research consultancy services.
- To apply for funding to Government agencies.
- Strengthen the infrastructure & facilities.
- To promote public health

PARENTS:

- To establish PTA.
- Involvement of parents in institutional bodies.
- To promote co-curricular activity through PTA.